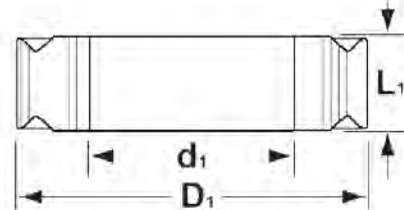
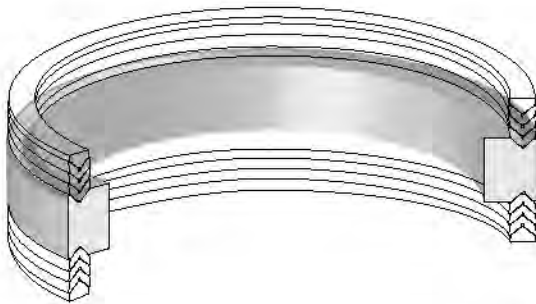


## NRB Nylon Rod Bearings - Inch, cont'd.

Part Number	Inside Dia. $d_1$	Outside Dia. $D_1$	Height $L_1$
NRB-5750-6250-1000	5.750	6.250	1.000
NRB-5750-6375-1000	5.750	6.375	1.000
NRB-5970-6520-800	5.970	6.520	0.800
NRB-6000-6500-750	6.000	6.500	0.750
NRB-6000-6500-937	6.000	6.500	0.937
NRB-6000-6500-1000	6.000	6.500	1.000
NRB-6000-6525-750	6.000	6.525	0.750
NRB-6000-6525-875	6.000	6.525	0.875
NRB-6000-6625-1100	6.000	6.625	1.100
NRB-6375-6875-203	6.375	6.875	0.203
NRB-6750-7250-1000	6.750	7.250	1.000
NRB-6750-7375-1000	6.750	7.375	1.000
NRB-6970-7520-835	6.970	7.520	0.835
NRB-6970-7520-1000	6.970	7.520	1.000
NRB-7000-7500-750	7.000	7.500	0.750
NRB-7000-7500-1000	7.000	7.500	1.000
NRB-7000-7525-750	7.000	7.525	0.750

Part Number	Inside Dia. $d_1$	Outside Dia. $D_1$	Height $L_1$
NRB-7250-7750-203	7.250	7.750	0.203
NRB-7875-8875-937	7.875	8.875	0.937
NRB-7900-8575-1000	7.900	8.575	1.000
NRB-7905-8543-1000	7.905	8.543	1.000
NRB-7970-8520-750	7.970	8.520	0.750
NRB-7970-8520-1000	7.970	8.520	1.000
NRB-8000-8500-750	8.000	8.500	0.750
NRB-8000-8500-1000	8.000	8.500	1.000
NRB-8000-8525-750	8.000	8.525	0.750
NRB-8000-8750-1000	8.000	8.750	1.000
NRB-8250-9000-750	8.250	9.000	0.750
NRB-8250-9250-500	8.250	9.250	0.500
NRB-9000-9750-750	9.000	9.750	0.750
NRB-9125-9750-750	9.125	9.750	0.750 \$
NRB-10750-11375-1000	10.750	11.375	1.000 \$
NRB-10750-11500-750	10.750	11.500	0.750 \$
NRB-10750-11500-1000	10.750	11.500	1.000 \$

## FCB Nylon Female Center Bearings - Inch & Metric



FCB bearings are made from glass filled nylon giving them excellent compressive strength. They are used in double acting piston applications between sets of vee packing.

EXAMPLE: FCB-4000-625			
Prefix	Outside Diameter		Height
FCB-	4000	-	625
	4"		5/8"

EXAMPLE: FCB-90MM-17			
Prefix	Outside Diameter		Height
FCB-	90	MM-	17
	90mm		17mm

Part Number	Bearing Size			Packing Size	
	I.D. $d_1$	O.D. $D_1$	Height $L_1$	I.D.	O.D.
FCB-2500-625	1.500	2.500	0.625	2.000	2.500
FCB-4000-625	3.000	4.000	0.625	3.500	4.000

Part Number	Bearing Size			Packing Size	
	I.D. $d_1$	O.D. $D_1$	Height $L_1$	I.D.	O.D.
FCB-80MM-17	55	80	17	65	80
FCB-90MM-17	65	90	17	75	90
FCB-110MM-17	85	110	17	95	110
FCB-115MM-17	90	115	17	100	115
FCB-125MM-17	100	125	17	110	125
FCB-150MM-17	125	150	17	135	150